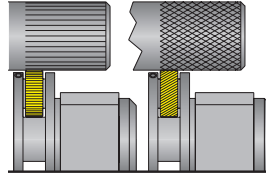




3SHKT - Three Swivel Head Knurling Tool

- Precision square shank with preset center height.
- Three sets of twin knurl wheels for Straight and Diamond pattern.
- Knurl wheels are mounted between the thrust washers to ensure a smooth and even rotation of the knurls while knurling is performed.
- With three pairs of knurl wheels and a swivelling head, changing knurl wheels requires less time.
- Can be reversed for right or left hand operation.
- Supplied with three pairs of diagonal knurls TiN coated for knurling Fine, Medium, and Coarse pitch diamond patterns.



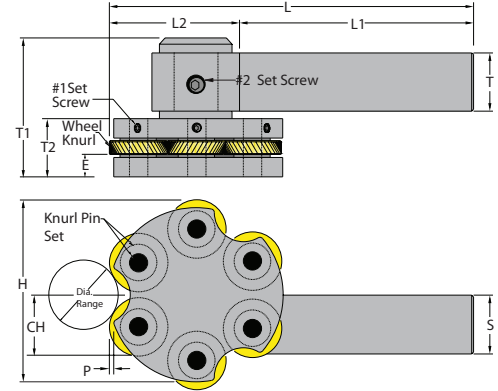
Straight pattern
with straight wheel.



Male diamond pattern
with diagonal wheel.



For best results, use beveled knurl wheels. In Feed the knurling tool into the blank until the correct pattern is generated, then End Feed.

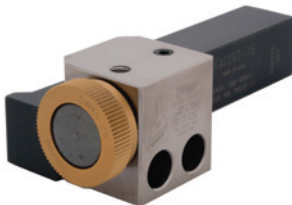


Metric Description	UPC No.	CH & S	Inch Description	UPC No.	CH & S	Dia. Range											Knurl Wheel	Knurl Pin Set		Set Screw		Spring & Ball Set	UPC No.
	733101-	mm		733101-	inch		E	H	L	L1	L2	P	T	T1	T2	Description		UPC No.	#1	#2			
3SHKT-12-D	21505	12	3SHKT-50-D	21510	0.500	1/4" & up 6,4mm & up	0.195	1.660	4.125	2.750	1.375	0.035	0.750	1.690	0.690	D *	KPS-18-62	28810	M3x.5	M6x1.0	STBL-18	28525	
3SHKT-162-D	21515	16	3SHKT-162-D	21515	0.625		0.195	1.660	4.125	2.750	1.375	0.035	0.750	1.690	0.690	D *	KPS-18-62	28810	M3x.5	M6x1.0	STBL-18	28525	
3SHKT-20-M	21525	20	3SHKT-75-M	21530	0.750	5/16" & up 8mm & up	0.380	3.000	5.500	3.250	2.250	0.075	1.000	2.375	1.125	M **	KPS-31-100	28845	M4x.7	M8x1.25	STBL-25	28530	
3SHKT-25-M	21535	25	3SHKT-100-M	21540	1.000		0.380	3.000	6.250	4.000	2.250	0.075	1.000	2.375	1.125	M **	KPS-31-100	28845	M4x.7	M8x1.25	STBL-25	28530	
3SHKT-32-M	21545	32	3SHKT-125-M	21550	1.250		0.380	3.000	7.375	5.000	2.375	0.075	1.000	2.375	1.125	M **	KPS-31-100	28845	M4x.7	M8x1.25	STBL-25	28530	

* Supplied with 3 sets of diagonal right and diagonal left high speed beveled knurl wheels, 20 TPI, 30 TPI, 40 TPI ** Supplied with 3 sets of diagonal right and diagonal left high speed beveled knurl wheels, 16 TPI, 25 TPI, 35 TPI. **Warning**, may cause deflection on small diameters, and too much pressure on large diameters.

FACEKT - Face Knurling Tool

- Precision square shank with preset center height.
- Single knurl wheel for Straight and Diamond pattern.
- Knurl wheel is mounted on the thrust washer to ensure a smooth and even rotation of the knurl while knurling is performed.
- Specifically designed to knurl small width face knurl patterns, even up to a shoulder.
- Can be reversed for right or left hand operation.
- Supplied with SW series knurl wheel TiN coated.



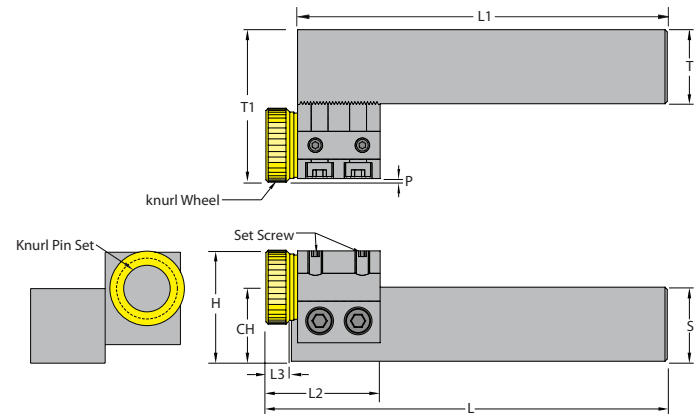
Straight pattern
with straight wheel.



Male diamond pattern
with female wheel.



For best results, In Feed the knurling tool into the blank until the correct pattern is generated.



Metric Description	UPC No. 733101-	CH & S mm	Inch Description	UPC No. 733101-	CH & S inch	Dia. Range									Knurl Wheel Style	Knurl Pin Set		
							Description	UPC No. 733101-	Set Screw									
FACEKT-20-2	21615	20	FACEKT-75-2	21620	0.750	Unlimited	1.000	4.375	4.100	1.375	0.265	0.050	0.750	1.530	SW2 *	SW2.0P-1S	29050	M3x.5
FACEKT-25-2	21625	25	FACEKT-100-2	21630	1.000	Unlimited	1.250	5.375	5.100	1.375	0.265	0.050	1.000	1.780	SW2 *	SW2.0P-1S	29050	M3x.5
FACEKT-20-4	21635	20	FACEKT-75-4	21640	0.750	Unlimited	1.250	4.500	4.100	1.500	0.405	0.050	0.750	1.780	SW4 **	SW4.0P-1S	29080	M5x.8
FACEKT-25-4	21645	25	FACEKT-100-4	21650	1.000	Unlimited	1.500	5.500	5.100	1.500	0.405	0.050	1.000	2.000	SW4 **	SW4.0P-1S	29080	M5x.8

Supplied with 1 straight high speed knurl wheel, * 30 TPI, ** 25 TPI. **Warning**, may cause deflection on small diameters, and too much pressure on large diameters.