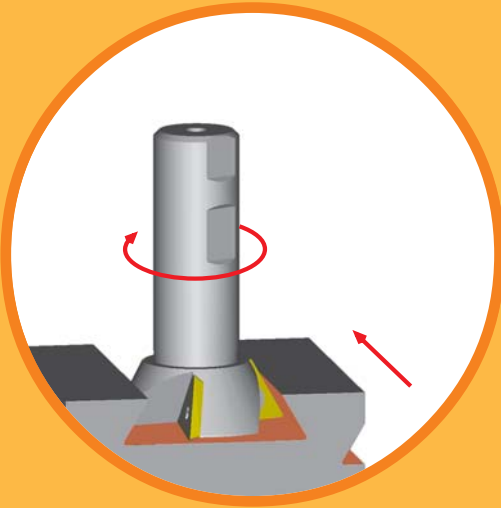


15° DOVETAIL CUTTER

Cutting Rake - 15°
for 15° positive **IDEX** inserts



Operation	Tool Rotation	Direction of Cut
15° Dovetail Facing	Right Hand	Horizontal

Milling Application

Finishing	Medium	Roughing
Good	Good	Average

Insert Type

Steel	Stainless Steel	Cast Iron	Aluminum	High Temper Alloy
TDEX-EN	TDEX-EN	TDEX-EN	TDEX-EN	TDEX-EN

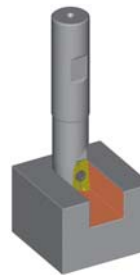
For insert information see pages E-68 to E-69.

TOOL ANGLES:

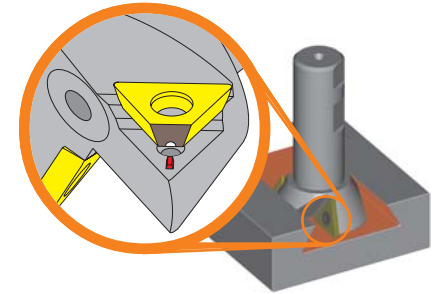
- Cutting Rake +15°
- Axial Rake +10°
- Radial Rake 14°

FEATURES:

- Available in 3/8", 1/2", 3/4", & 1.0" Weldon shank sizes
- Positive **IDEX** inserts, 15° clearance
- High rate of material removal
- Torx screw locking system
- Three cutting edges



In order for the dovetail cutter to be properly used, a 90° slot must first be cut into the material. This first cut allows clearance for the neck of the dovetail cutter during the final cut.

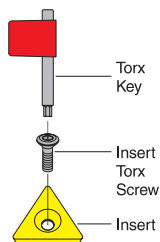


To ensure repeat ability, **DIVEDEX** cutters are designed with a precision machined alignment key that is integrated into each insert pocket. Combine this with the advanced design of the **IDEX** insert and the result is a superior dovetail cutter.

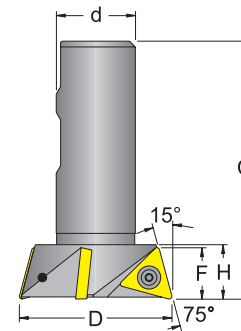
IDEX



True 15° Dovetail



For spare part information see page E-177.



D15X-000-TD00-000

Description	Part No. 733101-	C	D	d	F	H	No. Inserts	IDEX Gage Insert	Insert Torx Screw	Torx Key
D15X-050-TD11-037	65225	2.42	0.500	0.375	.359	0.42	1	110204	TS-25.45-6M1	T-7
D15X-100-TD11-050	65226	2.42	1.000	0.500	.359	0.42	3	160308	TS-4.7-10M1	T-15
D15X-187-TD16-075	65227	3.20	1.875	0.750	.550	0.75	3	220408	TS-5.8-10M1	T-20
D15X-250-TD22-100	65228	3.75	2.500	1.000	.750	1.00	3			